



CENTRAL DUPAGE HOSPITAL
EMERGENCY MEDICAL SERVICES SYSTEM
POLICY & PROCEDURES

TITLE: PRE-HOSPITAL COMMUNICATIONS

SECTION: COMMUNICATIONS

POLICY NUMBER: D-3

APPROVED BY: DR. STEVE GRAHAM EMS MEDICAL DIRECTOR

EFFECTIVE DATE: 01 JULY 2018

NUMBER OF PAGES: 2

PURPOSE:

To define the process for EMS providers contacting medical control for report and orders.

POLICY:

Central DuPage Hospital Emergency Medical Services System (CDHEMSS) providers shall have the ability to contact Medical Control (MC) by both cellular and MERCI technology, on frequencies assigned by the Illinois Department of Public Health (IDPH). The preferred method of communication is via cellular technology, with MERCI only being used as a backup or during a disaster when cellular communication is not possible. Additional means of pre-hospital communication may also include the use of E-Bridge notification app.

All vehicles licensed under CDHEMSS must have MERCI available to them per IDPH regulations.

1. Medical Direction:
 - a. Refusals, Time of Death (TOD), Bypass, Unusual circumstances (physician or nurse on scene)
 - i. Contact Central DuPage Hospital (CDH) directly
 - b. In situations when a crew receives orders from a Region 8 Hospital / Participating Hospital that they feel are outside their SOPs or may endanger patient care, CDH is to be contacted for override as the resource hospital.
2. Inbound Report:
 - a. Receiving hospital is within Region 8 (see list on page 3) or a Region 8 participating hospital (see list on page 3).
 - i. System specific procedure performed
 1. Contact CDH via cellular phone, or electronic notification (e-bridge), or MERCI if necessary
 - ii. No system specific procedure performed
 1. Contact receiving hospital via cellular phone, or E-Bridge is below conditions are met. Providers using E-Bridge shall always be able to contact Medical Control.
 - a. E-Bridge
 - i. Cardiac Arrest
 1. Patient \geq 18 years of age
 2. Patients not in traumatic arrest
 3. Patients who do not need decontamination

ii. STEMI Alert

1. Patients \geq 18 years of age
2. Patients without the need for airway intervention
3. Patients who have a stable (>90 mmHg) SBP
4. Patients who do not need pacing or cardioversion

iii. STROKE Alert

1. Patients \geq 18 years of age
2. Patients without the need for airway intervention
3. Patients who have a stable (>90 mmHg) SBP
4. Patients who do not need pacing or cardioversion

iv. BLS Alert

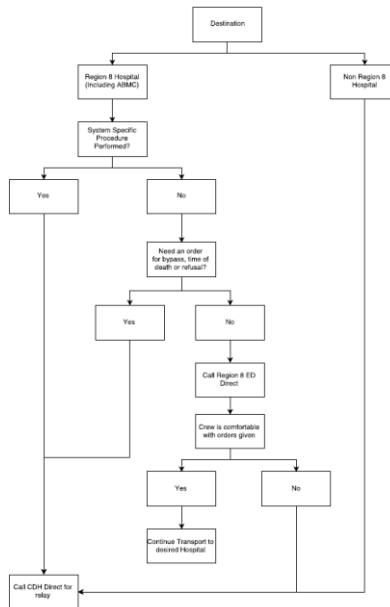
1. Patients who do not require ALS care per the region 8 EMS SOPs

v. Behavioral Alert

1. Patients who have not required chemical restraints

b. Receiving hospital is outside Region 8

i. Contact CDH for relay to receiving hospital



Effective Date:	01 July 2018			
Review Date(s):	01 July 2019			
Revision Date(S):	01 May 2019			